



Specification

Size	5950*3000*2800(L*W*H)
Loading	20GP=8 units 40HQ=18 units Flat package for more in shipping container cansave your cost
Material	1 .fullyinsulated roof,walls ,floor and windows2.Galvanized steel frame(thickness 2.5mm) 3.wall50mm rock woolsandwich panel class Afire proof&waterproof Material 4.floor-cement fberboard asbestos-free roof-980type galvanized color coated top tile(thickness0.45mm) 5.200kgm* ground floor loading customize available
Installation	3 hours 1 house assembled by bolts

Detachable Container House

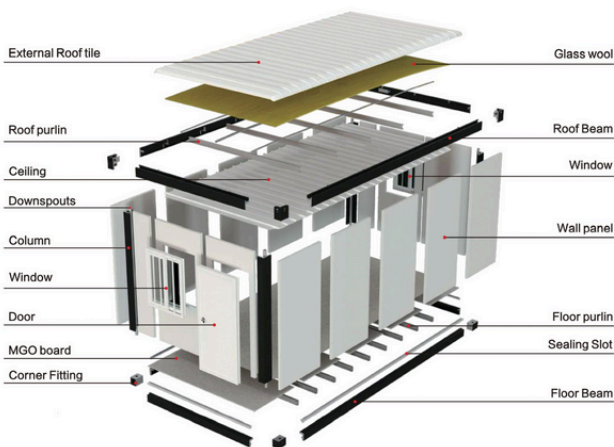
The 100-person container worker accommodation in Vietnam is a compact yet functional facility constructed from modified shipping containers. It provides essential living spaces for a sizable workforce. Inside, there are rows of individual compartments, each equipped with basic bunk beds, lockers, and a small window for natural light. Shared amenities, including communal bathrooms, showers, and a common area for meals and relaxation, are available. The design is efficient and sturdy, with proper ventilation and climate control. While it may lack some luxuries, this accommodation offers practical and economical lodging for a large number of laborers in a convenient and temporary setting.



CONTACT US

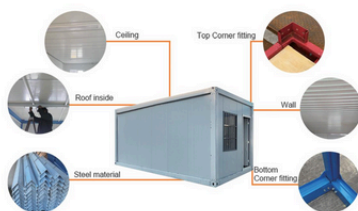
Multimagotrade.com
+40-758-667-671

Flexible Structure



Product Advantages

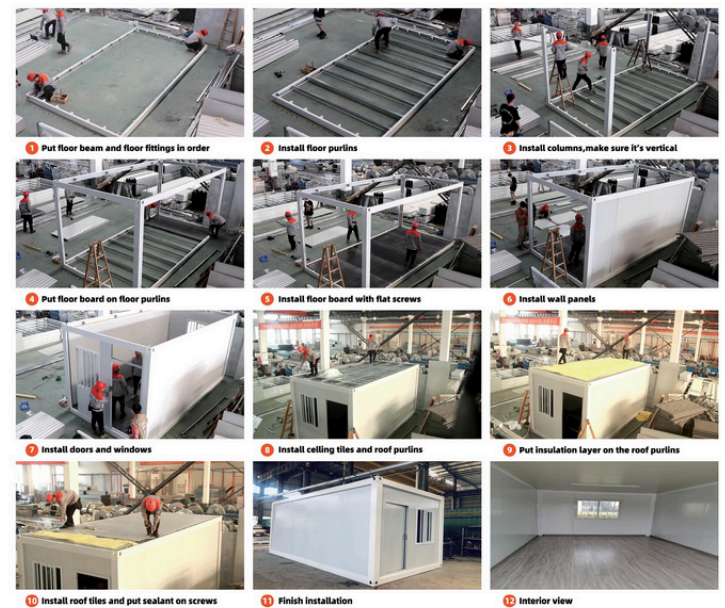
1. Flat package for more loading qty in shipping can save your cost
2. Assembles by bolts for flexible design
3. No need welding, no cranes and forklifts to install
4. It can meet 50 hoisting times in 15 years
5. More than 30% cheaper than the flat pack container house price



Loading and Quality control



Installation



CONTACT US

Global Cases

World Cup Fan Village

2000 units detachable container for dormitory, restaurant, shop, toilet, reception in Doha, Qatar



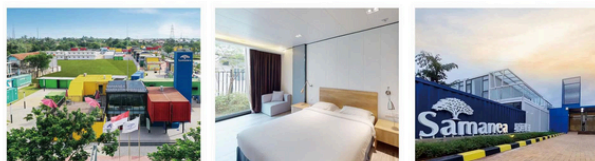
Turkey Earthquake Emergency Room

2023 Turkey Earthquake Emergency Housing 2,000 Sets for Disaster Relief



Indonesia Samanea Hotel

2021 Indonesia SAMANEA Hotel and Container Town



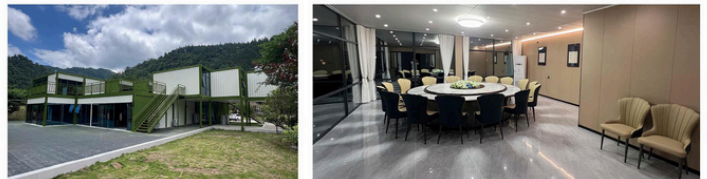
Containers for Barber shop

20 units detachable container house for barber shop in Grand Cayman Islands



Containers for Visitor Center

50 units detachable container for visitor center in Hunan



Containers for Public Toilet

5 units detachable container for public toilet in Guizhou



CONTACT US

15

16



Specification

Super space	10-72m2 One set of products can meet the layout requirements of various scenarios
Minimal mounting	4 workers+30 mins=1 house 98% preset in factory, no technical installation troubles
Aesthetic looking	Unique appearance modeling, beautiful and generous, line buried in the box
Thermal insulation	B1 fireproof EPS/rock wool/glass wool/Pu wool available in a variety of materials
Sturdy and durable	Q235B galvanized steel structure
Wind resistance	Up to level 12
Earthquake resistance	Level 8
Service life	15-20 years

Expandable Folding Container

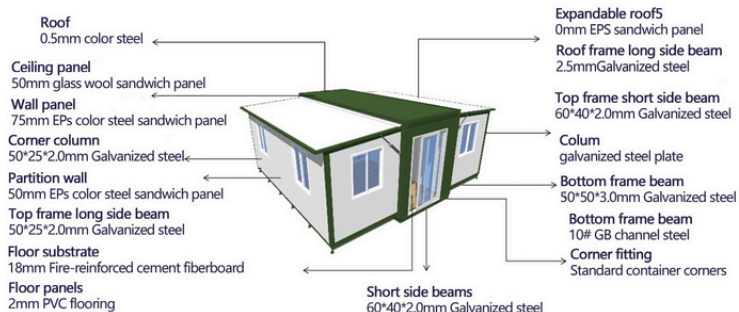
Expandable containers, also known as display containers, exhibition containers, or event containers, are a special type of shipping container that can be unfolded or expanded when needed, providing additional space and functionality.



CONTACT US

Multimagotrade.com
+40-758-667-671

Expandable Folding Container



Product Advantages:

1. esthetic looking: Inique appearance modeling, beautiful and generous, lineburied in the box
2. Easy and quick install: 98% reset in factory: 15mins 1 house
3. Super Space: 10-72m2
A set of products can make you live in economic comfort
4. lany kinds of creativity make your home- one in a million



Installation



Production



Welding

Paiting

Assemble

Folding

Packing

Loading



40HQ/40OT Shipping



CONTACT US

Multimagotrade.com
+40-758-667-671

More Detail

Small 20ft expandable container

Installed size: 5900L*4800W*2480(H)
mmInterior size: 5460L*4640W*2480(H)
mmFolded size: 5900L*700W*2480(H)
mmArea: 27.5m²

40HQ=6 units

DIFFERENT LAYOUT 27m²



20ft expandable container house

Installed size: 5900L*6320W*2480(H)
mmFolded size: 5900L*2200W*2480(H)
mmArea: 38m²

40HQ=2 units

DIFFERENT LAYOUT 36m²

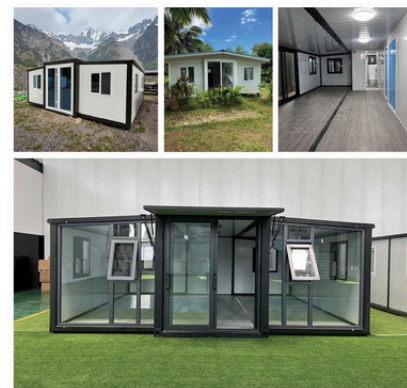
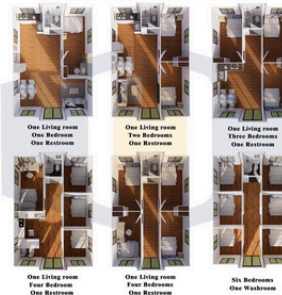


30ft expandable container house

Installed size: 9000L*6240W*2480(H)mm
Folded size: 9000L*2200W*2480(H)mm
Area: 54m²

40HQ=1 unit

DIFFERENT LAYOUT 54m²



40ft expandable container house

Installed size: 11800L*6240W*2480(H)mm
Folded size: 11800L*2200W*2480(H)mm
Area: 72m²

40HQ=1 unit

DIFFERENT LAYOUT 72m²



CONTACT US

Global Cases

Afghanistan Military Camping

This project is located in Afghanistan. We have supplied 120 sets to the military.



Personal Living or Air B&B

Equipped with full electrical wiring to US standards, providing flexibility for customization.



Personal Living or Air B&B

Two bedrooms, one living room and one kitchen, classic homestay theme.



American Outdoor Party House

The space of more than 72 square meters can be turned into a KTV or BBQ and comes with a bathroom.



CONTACT US



General Spec

Size	5900mm(L)*2500m(W)*2470mm(H)
Weight	1260kg
Structure	Galvanized Steel
Wall	50mm EPS Sandwich Panel Wall
Roof	75mm EPS Sandwich Panel+0.476mm galvanized steel plate
Floor	18mm Cement Board with 1.6mm PVC Leather Floor
Live load	200kg/m ²
Wind resistance coefficient	45m/s
Insulation coefficient	>R3.5
Used life	15 years

Z Folding Container House

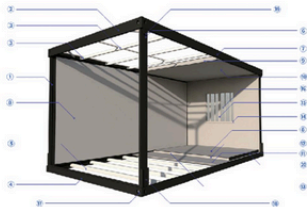
The container office is a workspace solution based on the design of folding containers, utilizing the stacking of multiple containers to create a flexible, customizable, and sustainable workspace environment.



CONTACT US

Multimagotrade.com
+40-758-667-671

More Details



1. Column, 2.5mm roller beam
2. Roof main beam, 2.3mm roller beam
3. Roof secondary beam, 1.0mm galvanized cold-rolled steel C-type
4. Ground main beam, 2.3mm roller beam
5. Ground secondary beam, 1.5mm galvanized cold-rolled steel C-type

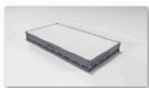
6. Bolt, Grade 8.8 high-strength bolt
7. Paint, electrostatic spraying plastic powder baking paint
8. Roof panel, t=0.45mm thick aluminum zinc coated color steel plate
9. Insulation cotton, 50mm glass wool felt
10. Suspended ceiling board, 0.3mm thick color steel plate suspended ceiling
11. Base plate, 18mm fireproof glass magnesium plate
12. Thickness, 50mm thick color steel rock wool sandwich board
13. Insulation, 0.3mm aluminum zinc coated color steel plate
14. Specification 950mm * 1100mm
15. Frame material, plastic steel
16. Double layer glass
17. Bottom frame corner piece
18. Outer shaft
19. Top fastener
20. Hinge ear of side panel wall

Advantages

1. 40% cheaper than flat pack container
2. Fast Installation, 20 mins 1 house
3. Inner drainage system
4. Electricity pre-assembled
5. Stack up to 3 floors
6. Sound proof as 24cm of brick wall



20 Mins 1 House



1



2

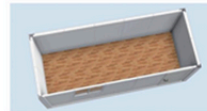


3



4

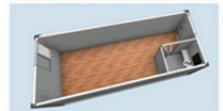
Floor Plan



Length: 5900mm/6055mm
Width: 2500mm/2990mm
Height: 2470mm/2760mm



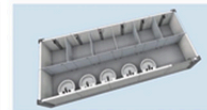
Length: 5900mm/6055mm
Width: 2500mm/2990mm
Height: 2470mm/2760mm



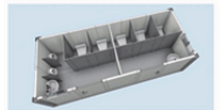
Length: 5900mm/6055mm
Width: 2500mm/2990mm
Height: 2470mm/2760mm



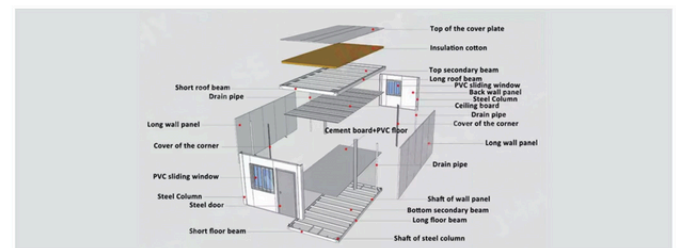
Length: 5900mm/6055mm
Width: 2500mm/2990mm
Height: 2470mm/2760mm



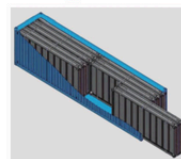
Length: 5900mm/6055mm
Width: 2500mm/2990mm
Height: 2470mm/2760mm



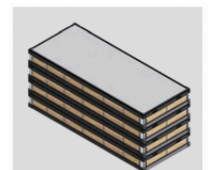
Length: 5900mm/6055mm
Width: 2500mm/2990mm
Height: 2470mm/2760mm



Packing Solution



Option 1
Container size: 5900*2500*2470mm
Package method: Flat pack
Loading Qty: 10 units per 40ft HQ



Option 2
Container size: 5900mm*2990mm*2760mm
Package method: Flat pack
Loading Qty: 8 units per 40ft OT



CONTACT US

Global Cases

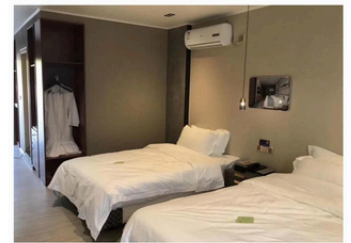
QingHuang Island School Project

120 Units of Z Foldable House



Purple Small Pub

2 units double Z folding container house as Small pub in Malaysia



Temporary Camp Office

300 units double Z folding container house as dormitory of Dual Unicom series in Congo

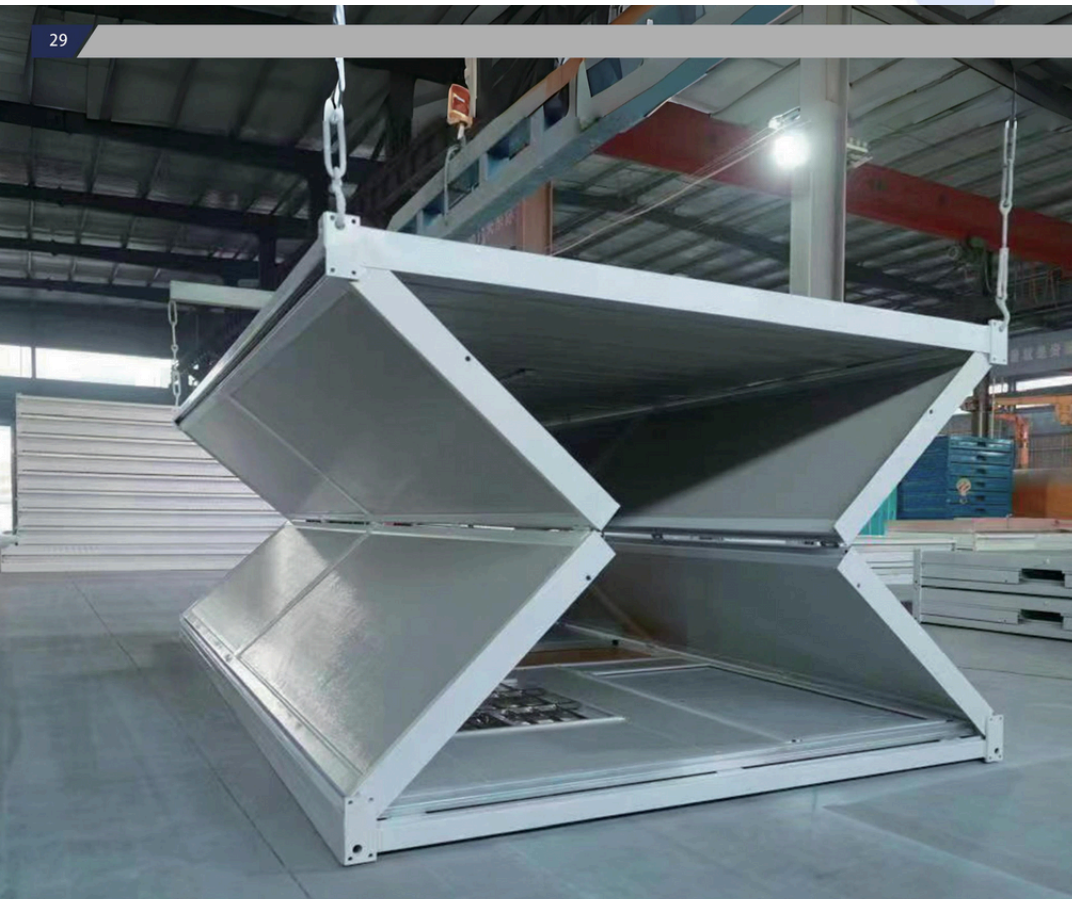


Russia worker camp

523 units for the office and accomodation for the labor



CONTACT US



General Spec

Size	6000mm(L)*2500mm(W)*2400mm(H)
Weight	1300KG
Structure	Galvanized square pipe
Wall	50mm EPS Sandwich panel
Roof	0.38mm Galvanized steel palteSandwich panel
Floor	18mm MGo board
Windows	920mmx1200mmUpvc sliding window
Door	920mmx2040mm Steel door
Wind resistance	24.5m/s-28.4m/s
Earthquake resistant	7 Grade
Floor load capacity	2.0kN/m
Time to install	2 miny1 Unit
Loading	12 Units/40 HQ

Foldable Container

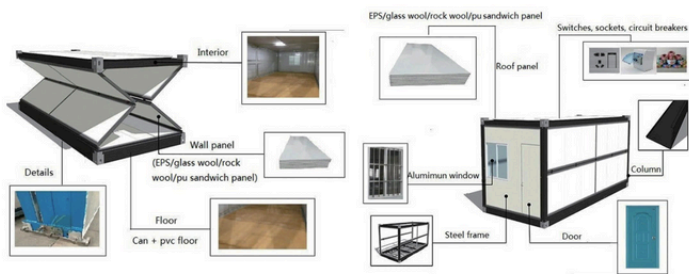
This refugee camp project involves the use of folding container houses specifically designed to address the housing needs of refugees. These homes feature collapsible shipping container units that can be swiftly assembled and disassembled to adapt to changing population dynamics.



CONTACT US

Multimagotrade.com
+40-758-667-671

More Details



2 Mins 1 House



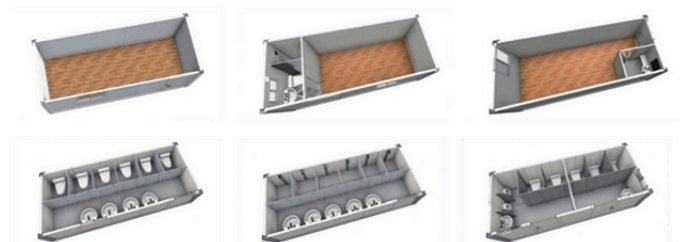
Product Advantages

1. 2 people and 2 minutes to complete a unit
2. Save transportation cost
3. 15-20 years service life
4. 60% lower than the traditional construction cost
5. No construction waste in the construction site



Floor Plan

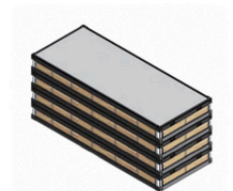
Length: 6000/6058mm
Width: 2438mm
Height: 2591/2791/2991mm



Strategy & Commitments



Option 1
Container size: 5900*2500*2470mm
Package method: Flat pack
Loading Qty: 12 units per 40ft HQ



Option 2
Container size: 5900mm*2990mm*2760mm
Package method: Flat pack
Loading Qty: 8 units per 40ft OT



CONTACT US

Global Cases

50 Units of African Foldable Dormitory Camp Housing



218 Units of Foldable House Worker Dormitories in Congo



500 Units of Foldable House Construction Camp in Vietnam



45 Units of Foldable House Collective Dormitories in Indonesia



CONTACT US



A New Option for Campsites and Tourist Attractions

A New Option for Campsites and Tourist Attractions	
Title	Description
1. Luxury Living	Our capsule houses are beautifully designed and fully furnished, eliminating the need for decorating.
2. Space-Age	The exterior resembles a spaceship, making it a standout feature in any setting.
3. Plug-and-Play	Delivered to your chosen location, just connect utilities and enjoy modern living.
4. Versatile Accommodation	Perfect for tourist spots, remote getaways, and event accommodations.
5. Sustainable Living	Made from repurposed shipping containers, our capsule houses are eco-friendly and sustainable.

Capsule House

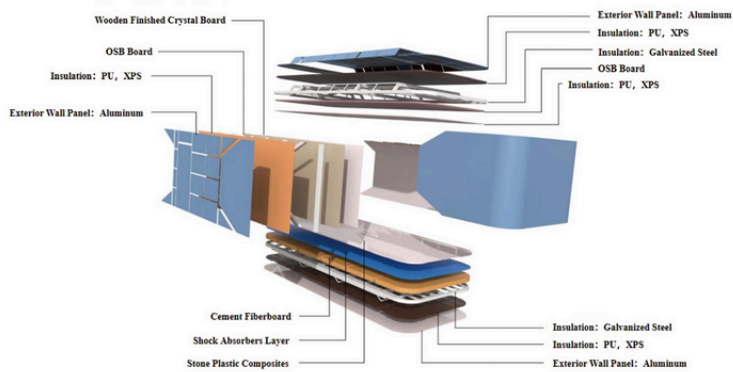
Our Capsule Houses Are Transforming Camping and Tourism. fully Furnished and Ready for Adventure--Just Plug in Utilities. Resembling Spacecraft, These Eye-Catching Structures Add Wonder to Any Location, Perfect for Unforgettable Photos.



CONTACT US

Multimagotrade.com
+40-758-667-671

Capsule House



Peripheral Protection System

Galvanized Steel Frame
Fluorocarbon Aluminum Alloy Shell
Insulated, Waterproof and Moisture-Proof Construction
Tempered Laminated Glass Skylight
Hollow Tempered Glass Windows
Stainless Steel Side-Hinged Entry Door

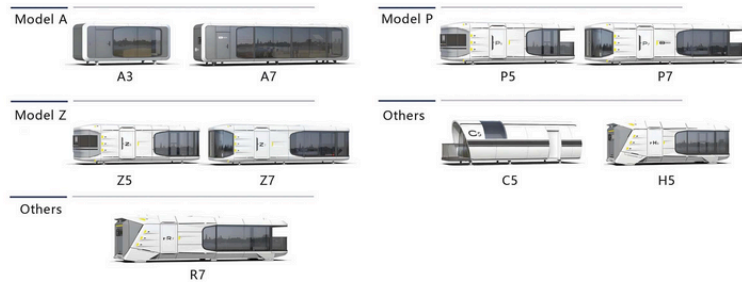


Exquisite Interior Decoration

Integrated Modular Ceiling & Wall
Stone Plastic Composite Floor
Privacy Glass Door for Bathroom
Marble Floor for Bathroom
Washstand/Washbasin/Bathroom Mirror
Bathroom Hook/Shelf/Towel Rack
Toilet/Faucet/Shower/Floor Drain
Whole House Lighting System
Whole House Plumbing & Electrical System
Touch-Open Curtains
Air Conditioner



Product Models



Shipping And Packing - 40 FT Flat Rack Shipping Container

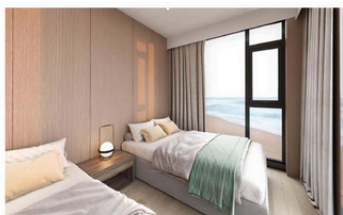
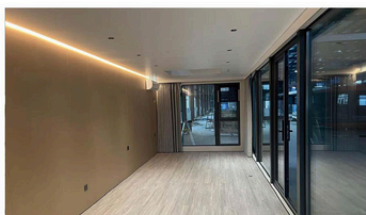


CONTACT US

Capsule House-A3

OVERVIEW

LENGTH	5600mm
WIDTH	2800mm
HEIGHT	3100mm
BUILDING AREA	15.7m ²
NET WEIGHT	5tons
ELECTRICITY POWER	6.7KW/ 11.2KW



Capsule House-Z7

OVERVIEW

LENGTH	11500mm
WIDTH	3300mm
HEIGHT	3200mm
BUILDING AREA	38m ²
NET WEIGHT	8.5tons
ELECTRICITY POWER	9KW



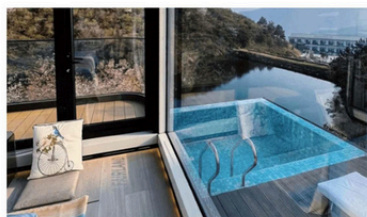
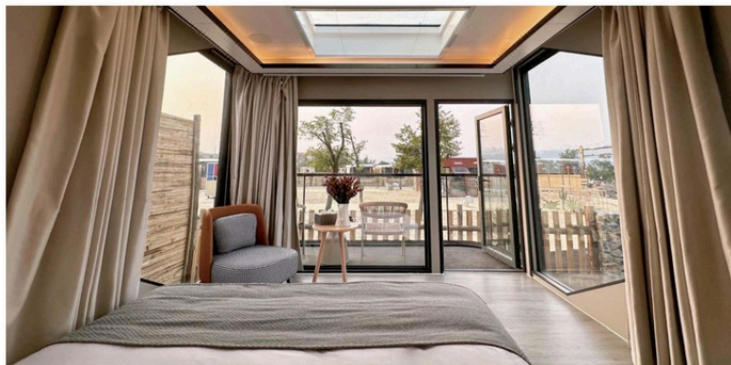
CONTACT US

Multimagotrade.com
+40-758-667-671

Capsule House-Z5

OVERVIEW

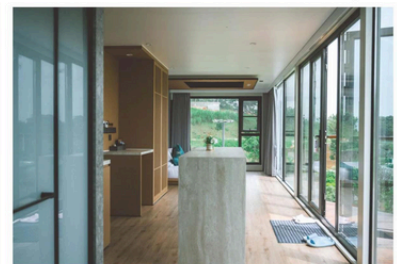
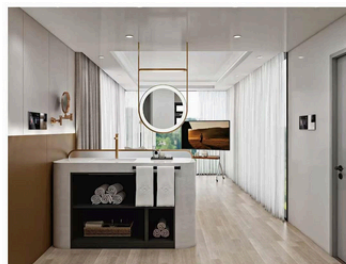
LENGTH	9500mm
WIDTH	3300mm
HEIGHT	3200mm
BUILDING AREA	31.4m²
NET WEIGHT	7 tons
ELECTRICITY POWER	7.5KW/12 KW



Capsule House-A7

OVERVIEW

LENGTH	11500mm
WIDTH	3300mm
HEIGHT	3300mm
BUILDING AREA	38m²
NET WEIGHT	9 tons
ELECTRICITY POWER	9.9KW/15.4 KW



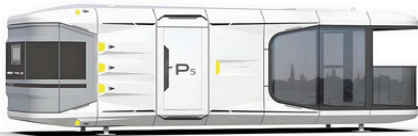
CONTACT US

Multimagotrade.com
+40-758-667-671

Capsule House – P5

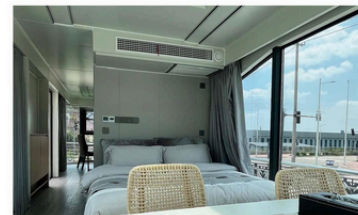
OVERVIEW

LENGTH	9500mm
WIDTH	3300mm
HEIGHT	3200mm
BUILDING AREA	31.4m ²
NET WEIGHT	7 tons
ELECTRICITY POWER	7.5 KW/12KW



Capsule House – P7

LENGTH	11500mm
WIDTH	3300mm
HEIGHT	3200mm
BUILDING AREA	38m ²
NET WEIGHT	9 tons
ELECTRICITY POWER	11.5 KW/17KW



More Design

Space Capsule Rhineland Bay project



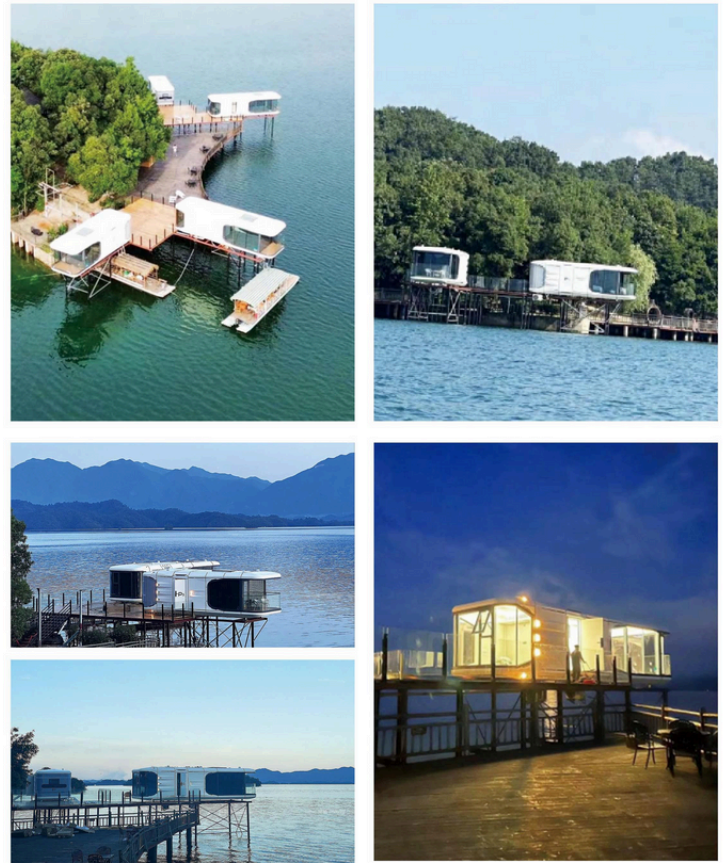
Space capsule New Zealand Resort Project



Space capsule US Resort Project



Space Capsule Jiangxi Project



CONTACT US



Product Features

Size	1-9m customizable
Material	Imported polycarbonate panel Thickness: 3mm-5mm
Fire resistance	Fire Class B1 (flame retardant class)
Install	Modular assemble system 30-60mins/unit
Appearance	1.Transparent 2.360°transparent experience
Multiple application scenarios	At present, the star room series products have a variety of specifications, different specifications of the product can be combined with each other splicing, high flexibility, can meet the application requirements of various scenes.

Star Dome & Bubble House

Turkey 100+ units of star house or tourist attractions, including restaurants, homestays, hotels, etc

During the Qatar World Cup, more than 50+ units were exported to Qatar for B&B hotels and restaurants



CONTACT US

Multimagotrade.com
+40-758-667-671

Flexible Structure

Dome-type structure

Dome structure design, streamlined double curved surface, small wind resistance coefficient, outdoor use can withstand 12 typhoons



Smart door lock system

Hotel card door lock. It can connect wechat, Blue-tooth and other functions to facilitate the operation and management of scenic spots

Shading system

The product is equipped with a sun-shade curtains system as standard, and the top curtain is opened and closed by remote control to maximize user privacy, while playing a certain degree of thermal insulation effect, and high living comfort.

Indoor ventilation

This product is equipped with screen doors, side windows, ventilation system as standard, and optional electric opening and closing of the top cover, natural air circulation, to achieve the ventilation effect of indoor air replacement

Product Advantages:

1. 15 mins 1 house: quick installation and easy disassembly
2. Freely combine and splice
3. 0 water leakage: structural waterproofing
4. 90% light transmittance
5. -40°C~+40°C temperature resistance
6. 3mm-5mm PU material Anti-ultraviolet and antiaging



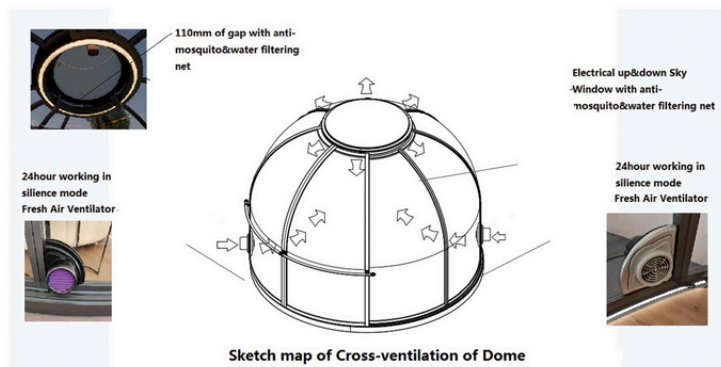
Economical Model



CONTACT US

Multimagotrade.com
+40-758-667-671

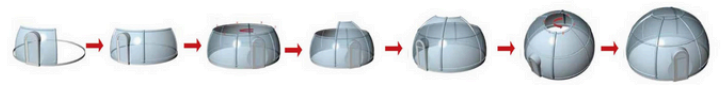
High-End Model



Loading



Installation



Indonesia Star Room Tourist Resort



Saudi Star Room Tea Room



Philippines Star Room Commercial Street



China Weihai Star Room Tourist Attraction



CONTACT US



Product Features

Loading	40HQ=290m ² 290m ² *18kg/m ² =5220kg/40HQ
Level limit	1-3 floors
Wind resistance	Level 11
Earthquake resistance class	Level 7
Installation speed	4 workers+1 day=150m ²
Service life	10 years
Dismantle and reassemble	5-6 times
Steel content	18-20kg/m ²

K House

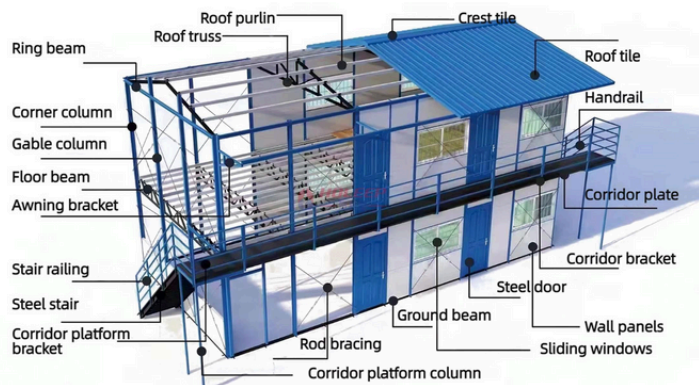
The K-type house features a light steel frame for structural support and easy installation. The light steel keel is strong, earthquake-resistant, and waterproof, ensuring safe living in harsh weather conditions. It offers excellent sound insulation and maintains a comfortable temperature year-round, with low maintenance requirements and investment value, suitable for frequent relocation, temporary living, and various uses.



CONTACT US

Multimagotrade.com
+40-758-667-671

K House



Product Advantages

1. It has the characteristics of strong versatility, easy disassembly, assembly and reorganization, long service life and high turnover times.
2. Structural waterproofing: The mobile home adopts structural waterproof design and does not require any additional waterproofing treatment.
3. Convenient disassembly and assembly: The house can be disassembled and assembled many times and reused. The installation process requires only simple tools.



Installation



The structure of the K-type house is constructed from light steel, typically comprised of prefabricated steel components.

These elements are assembled using bolts, welding, or other methods of connection to establish the fundamental framework of the house.



CONTACT US

Global Cases

K houses are widely used in

1. temporary construction houses for field operations such as roads, railways, and construction;
2. temporary buildings such as urban municipal
3. commercial buildings, such as: temporary offices, conference rooms, headquarters, dormitories and shops, schools, hospitals, parking lot, exhibition hall, maintenance department, gas station, etc.



Accommodation-1-3 Floors



Construction Site -With Roof

The roof is a gabled slope (also called a double slope) with free drainage. The leaky skeleton can be seen in the overall appearance, which is the main feature of the K house.



Workers Dormitory In Indonesia

It covers an area of about 1,800 m² and can accommodate 500 workers for workers' dormitories and activities.



CONTACT US

61

62



EPS Mobile Toilet

Size	1100*1100*2300m(L*W*H)
Weight	100KG
Loading	20GP=28units 40HQ=75units(in bulk) 20GP=10units 40HQ=20units(in whole)
Material	1.Exterior wall: 50mm color steel sandwich panel 2.Interior wall: 50mm color steel insulation board 3.Frame: 1.0mm aluminum alloy molded
Color	Color steel plate blue outside and white inside(customizable)
Used life	More than 10 years

HDPE Mobile Toilet

Size	1000*1000*2300m(L*W*H)
Weight	73KG
Loading	20GP=35units 40HQ=90units(inbulk) 20GP=10units 40HQ=24units(in whole)
Material	1.High-density polyethylene with grade 8 UV-resistant 2.Exterior wall: HDPE material 3.Interior wall: HDPE material Clean water tank: 50L Waste holding tank: 190L
Color	Blue door grey wall(customizable)
Used life	1 year warranty for pumps and 6 years for other parts

EPS/HDPE Mobile Toilet

Advantages: Very easy to install, 2 people can finish one unit within 30 mins. Environmental protection and economy: no construction waste, be recycled and reused to serve different projects without reconstruction.

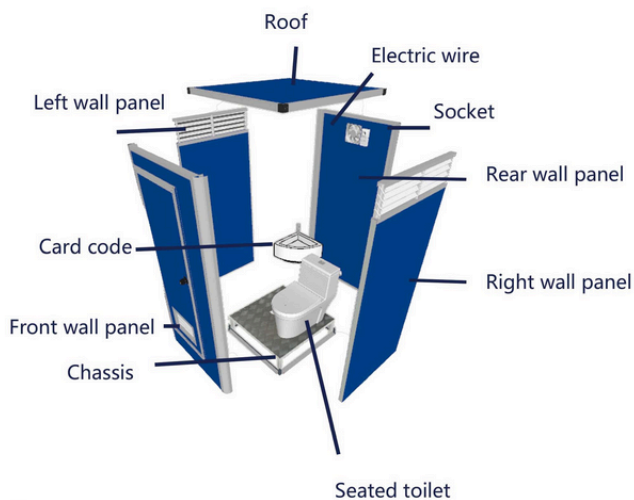
Application scenarios: Outdoor activities/Parks/Beach/Construction Sites/Open-air weddings/Outdoor disaster relief, etc.



CONTACT US

Multimagotrade.com
+40-758-667-671

More Details

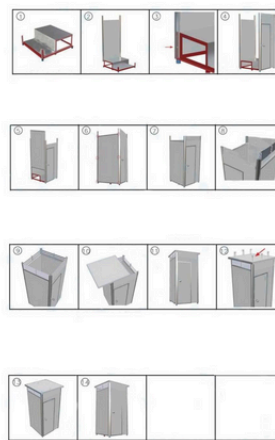


Advantage

All-plastic design, high impact resistance, environmentally friendly recycling.
Flat door panel design, beautiful and elegant.
Ventilation window design all around, good ventilation performance.
Easy to install and can be disassembled and assembled by yourself.



Installation process



1. Swing the toilet base on a flat ground, ready to install
2. Insert the two aluminum alloy pillars of the rear wall into the base angle iron, and just click into it after being installed correctly
3. The part of the wall corner post and the base angle iron is perforated with an electric drill, and then the corner post and the base angle iron are fixed by pulling rivets, and the other post is also operated in the same way.
4. Fix the front wall with the base angle iron in the same way
5. Raise the wall slightly, firstly insert the lower two corners into the corner post card slot, and then pull down after inserting the slot post until the bottom
6. After the side wall is in place, use an electric drill to perforate the position shown in the figure above and fix it with rivets. At this time, the side wall is firmly connected to the front and rear walls.
7. Use the same method to the other side connect wall to the front and rear walls.
8. Put down the ventilation shutters along the corner post card slot until the left and right sides are even.
9. Install other ventilation shutters in the same way.
10. Move the roof to the toilet room and prepare for installation.
11. Adjust the roof evenly from left to right and front to back, ready to fix it in the next step.
12. Use the distributed self-rose screws shown in the picture, at the front and rear plate positions, screw the self-rose screws and the aluminum U-shaped groove of the plate from the top to fasten it.
13. Use the same method to fix the U-shaped grooves above the top and back plates with self-rose and then put as screws, little glass glue on the for waterproof screws sealing.
14. The toilet is installed! The remaining internal gadgets installed.

Option Choices

Diverse optional accessories greatly improved the comfort of product using!



Tissue Paper Box



Urinal



Drain Valve



Wheels



Dispenser



Hand Shower



CONTACT US

Mobile Toilets for construction sites



Mobile Toilet in Shanghai Marathon Competition



Mobile Toilet in Hangzhou Asian Games



Mobile Toilet for Concerts



Public Mobile Toilet for Residential Community or Commercial Street



CONTACT US



Product Features

Size	5900(L)*2435(W)mm*2896(H)mm
Weight	2500kg
Structure	galvanized cold rolled section steel
Wall	50mm thick rock wool sandwich panel
Roof	0.45m thick galvanized color steel plate + 50mm rock wool
Floor	18mm fireproof cement fiber board with 1.6mm pvc flooring
Live load	300kg/m ²
Wind resistance coefficient	45m/s
Insulation coefficient	>R3.5
Used life	more than 20 years

Flat Pack Container House

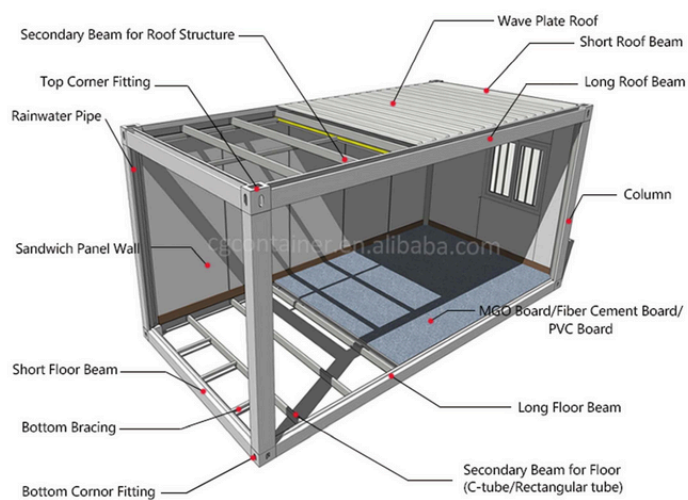
Flat pack container house, test of 54 people standing on the top at the same time, no deformation and water leakage. Fully and automatically welded by robots, no glued, and doubled the service life. Adopts 360° suspended full spray, anti-corrosion, and maintenance-free within 15 years.



CONTACT US

Multimagotrade.com
+40-758-667-671

Flat pack Container House

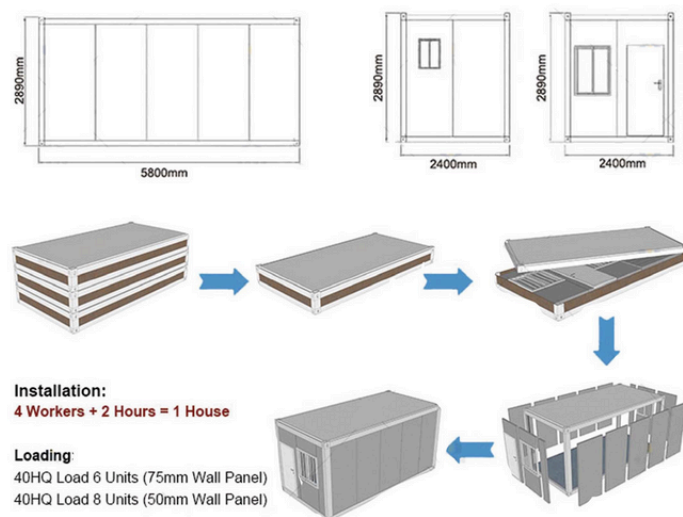


What Difference

1. The roof is fully welded, so it is not easy to leak
2. The roof can stand 55 people and is strong enough
3. Fully automatic welding, high stability
4. Automatic powder spraying and baking paint, strong adhesion
5. Full materials are used to meet industry standards



Installation



Layout Solutions



1. One container with bedroom and bathroom

2. Two containers combined with bedroom, bathroom and living

3. Three containers combined with bedrooms, living room and kitchen



CONTACT US

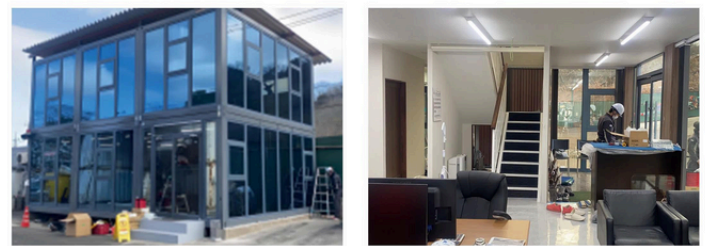
Temporary Hospital

1000 units flat pack container house as dormitory in Wuhan during coronavirus



Japan Office Project

8 units flat pack container house as office in Japan



New Zealand Beekeeping Houses

Export of 80 New Zealand beekeeping houses in 2022



Beijing 2022 Winter Olympics Monitoring Container Room

The two-story container control room for the 2022 Beijing Winter Olympics is meticulously designed, fully functional, user-friendly, and environmentally sustainable



CONTACT US



Product Features

Size	5.9*2.35*2.591m(L*W*H) 12.192*2.438*2.591(L*W*H)
Structure	Certified shipping container frame
Wall&roof	Skeleton 50~200mm C-beam+fireproof rock wool(or PU)+OSB board+Bamboowood fiber board
Floor	28 plywood floor+vinyl Pvc
Live load	200kg/m
Wind resistance coefficient	50m/s
Insulation coefficient	>R3.5
Used life	More than 20 years

Shipping Container

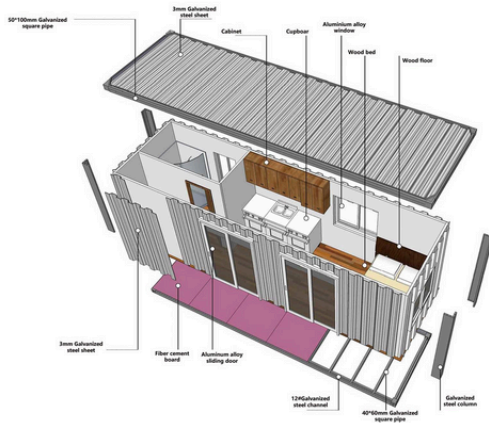
A four-story apartment complex, crafted from white shipping containers and adorned with glass curtain walls, elegantly combines industrial and modern design. This innovative transformation offers abundant natural light and panoramic views. Inside, the container modules are ingeniously reconfigured into various apartment layouts, while sustainable features like solar panels and rainwater harvesting contribute to its eco-friendliness.



CONTACT US

Multimagotrade.com
+40-758-667-671

Lego Shipping Container



Product Advantages:

1. Cost-effectiveness: Affordable Construction Option.
2. Durability: Built to withstand tough conditions.
3. Sustainability: Eco-friendly by re-pur-posing materials.
4. Modularity: Easily adaptable and ex-pandable.



Interior Design Sample



Size Reference

Common Container Parameter List

There are many kinds of containers that meet the current international standards, but width is the same (2438mm). The commonly used containers are:

Standard	External Length	External Width	External Height	Area
Standard 20 foot	6 meters	2.4 meters	2.6 meters	14 square meters
Standard 40 foot	12 meters	2.4 meters	2.6 meters	28 square meters
Standard 40 foot	12 meters	2.4 meters	2.6 meters	28 square meters

Note: For the old container, the new container size can be customized if the size of the old container is rebuilt. It is generally 3m wide or 3.3m wide. 3m and 3.3m is customized for assembly container combined building width and equipment cabin.



Other Shipping Energy Containers



Shop Container



Battery Container



Lab Container



Sewage Filtration Container



CONTACT US

Multimagotrade.com
+40-758-667-671

Global Cases

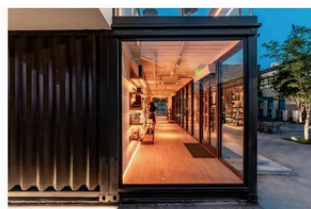
Residential Design

Two storey grey shipping container dorm in Perth Australia for mine workers



Commercial Design

Starbucks Cafe in Shanghai China



Cabin Design

Airbnb/Inn/Countryside House in New Guinea



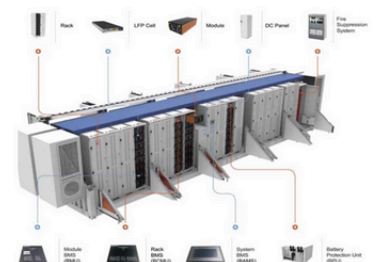
Liquid-Cooled Energy Storage-Outdoor Container

UL9540 and UN3536 certified centralized large-scale energy storage stations for delivery in North America, Israel, Europe and elsewhere.



Non-Walk-in-Air-Cooled Energy Storage Container

UL9540 and UN3536 certified centralized large-scale energy storage stations for delivery in America, Italy and German

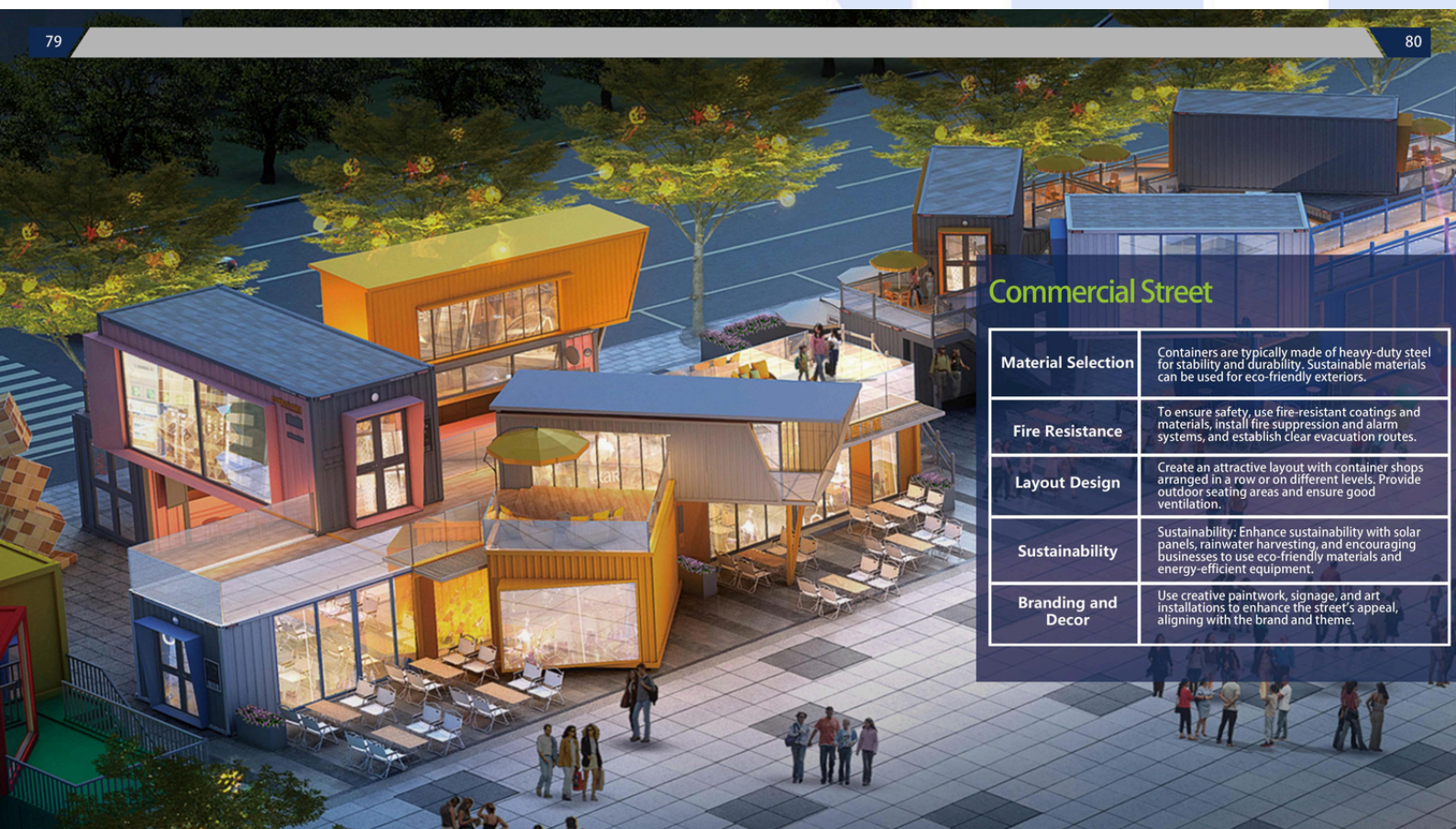


Containers for Public Toilet

5 units detachable container for public toilet in Guizhou



CONTACT US



Commercial Street

Material Selection	Containers are typically made of heavy-duty steel for stability and durability. Sustainable materials can be used for eco-friendly exteriors.
Fire Resistance	To ensure safety, use fire-resistant coatings and materials, install fire suppression and alarm systems, and establish clear evacuation routes.
Layout Design	Create an attractive layout with container shops arranged in a row or on different levels. Provide outdoor seating areas and ensure good ventilation.
Sustainability	Sustainability: Enhance sustainability with solar panels, rainwater harvesting, and encouraging businesses to use eco-friendly materials and energy-efficient equipment.
Branding and Decor	Use creative paintwork, signage, and art installations to enhance the street's appeal, aligning with the brand and theme.

Commercial Street

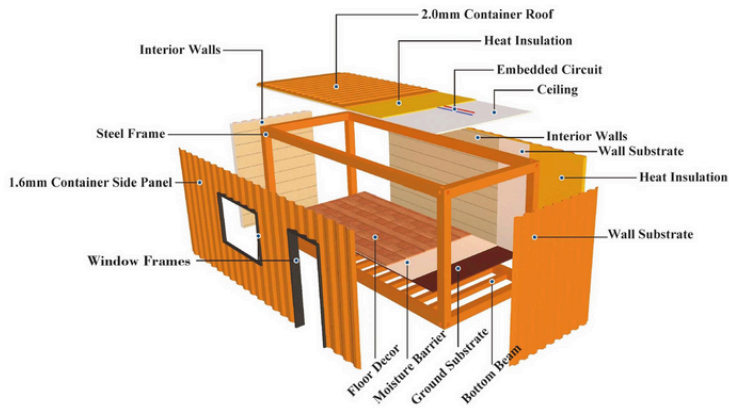
After customization, ordinary containers can be transformed into beautiful commercial housing and container shops. Nowadays, they are widely used in many fields, such as the construction of commercial streets, tourist attractions, town bookstores, leisure places, office buildings, schools, etc. Personalized container stores can create the overall atmosphere of the shopping street, create public space, improve the store image, and attract people.



CONTACT US

Multimagotrade.com
+40-758-667-671

Commercial Container Series



Product Advantages:

1. Save 30% than traditional building and sustainable practices
2. Modular and Quick construction
3. Unique aesthetics and Versatile
4. Less site maintenance



5+1 Solutions For Different Application Scenario

By Using Different Containers To Match
All Kinds Of Mobile Industry Scenarios



Commercial Scenes Solution



Barber Shop



Beer House



Book Shop



Coffee Shop



Movable KTV



Restaurant



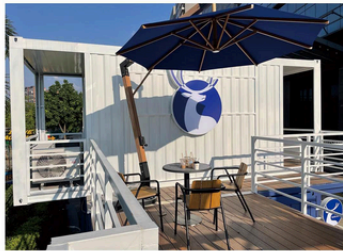
CONTACT US

Multimagotrade.com
+40-758-667-671

Global Cases

Coffee Shop

Luckin Coffee Shop in Shenzhen, China



Book Shop

Book Shop in Hongkong, China



Village Center

Village Center in Shanghai, China



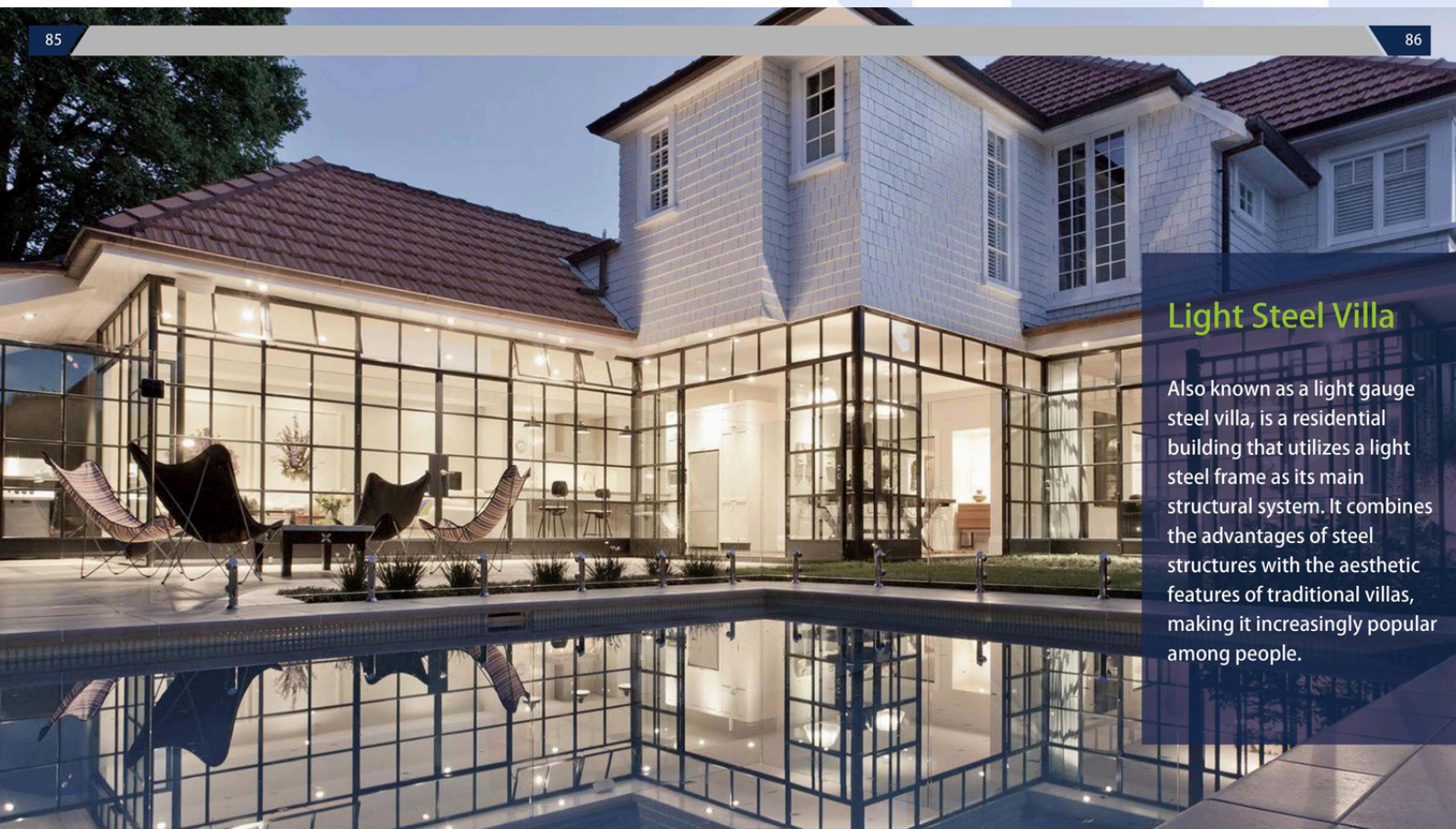
Tourist Center

Tourist Center in United Kingdom



CONTACT US

Multimagotrade.com
+40-758-667-671



Light Steel Villa

Also known as a light gauge steel villa, is a residential building that utilizes a light steel frame as its main structural system. It combines the advantages of steel structures with the aesthetic features of traditional villas, making it increasingly popular among people.

Light Steel Structure Prefabricated House

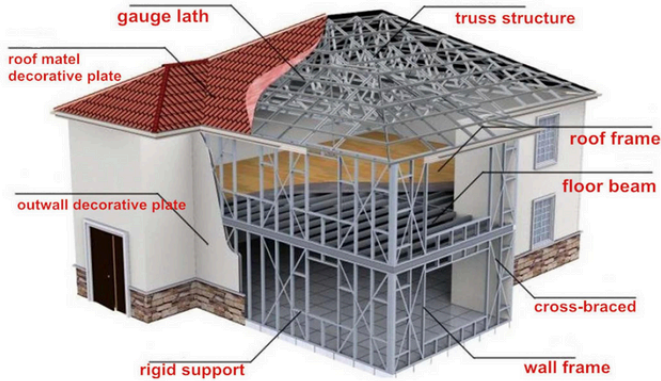
Light steel villas have advantages in various aspects, such as seismic performance, construction speed, and customizability. They are commonly used in residential buildings, vacation villas, hotels, and other applications. With advancing technology and increasing demand for sustainable construction, light steel villas have a promising future ahead.



CONTACT US

Multimagotrade.com
+40-758-667-671

Light Steel Structure Prefabricated House



Product Advantages:

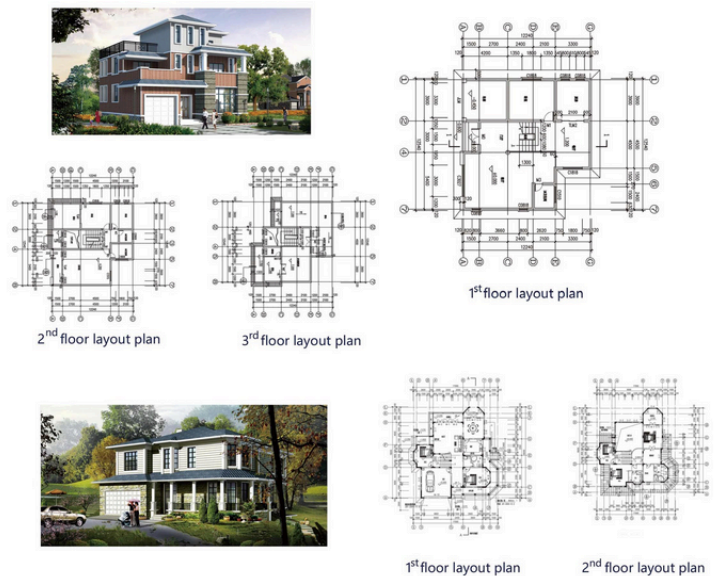
1. Cost-effectiveness: Affordable construction option.
2. Durability: Built to withstand tough conditions.
3. Sustainability: Eco-friendly by repurposing materials.
4. Modularity: Easily adaptable and expandable.



Installation



Customized Layouts



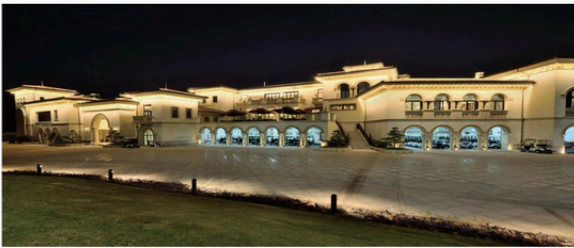
Loading Steps



CONTACT US

Presidential Suite Project at the Golf Course

A sturdy, efficient and sustainable home of steel structure



Singapore High-End House

The high strength and durability of steel ensure that your home can withstand the test of natural disasters, be it earthquakes, hurricanes, or fires



CONTACT US

Introduction

Steel Structure		6000mm(L)*2500mm(W)*2400mm(H)
1	Steel column	HN250*125*6*9
2	Steel roof beam	HN250*125*6*9
3	Roof Purlin	C180X70X20X2.0
4	Tie rod	Φ89*3.0
5	Bracing	Φ18
Roof System		
1	Roof material	Cumugated Color-coated Steel Sheet (760 type, thickness: 0.8mm)
2	Purlin Rod	Φ12
3	Purlin Supporting Bar	Φ32*2.0
4	Gutter	Galvanized Steel
5	Downpipes	Φ160PVC
6	Trins	Color-coated steel
Accessories		
1	Bolts	M20 high strength
2	Bolts	M20 general type
3	Nuts	M12
4	Selftapping	M5.5
5	Package	Steel decking

Steel Structure

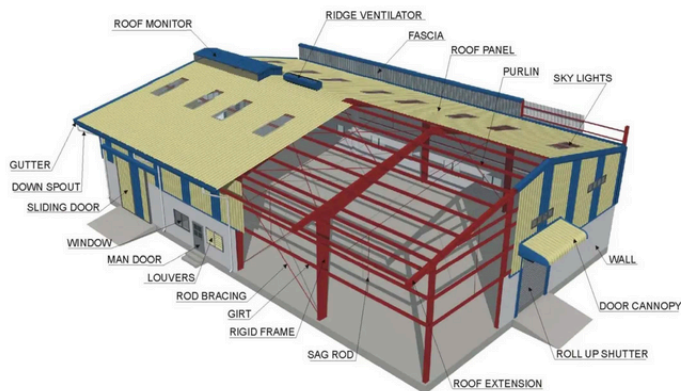
Steel structure construction is a building form that utilizes steel as its primary structural material. Compared to traditional concrete or wood structures, steel structures offer several advantages.



CONTACT US

Multimagotrade.com
+40-758-667-671

Steel Structure



Product Advantages:

- 1.Strength and Durability
- 2.Flexibility and Reusability
- 3.Rapid Construction
- 4.Open Space Design
- 5.Sustainability



Installation



Loading



Steel structure construction offers fast construction speed. Prefabricated steel components can be manufactured in factories and quickly assembled on-site. This efficient construction process saves time and labor resources.

Construction Process



Steel Structure Assembly:

Transport prefabricated steel components to the site and then assemble them according to the design drawings. This includes the erection of walls, stairs, roofs and other structures.

Structural Fixing:

The steel structure is firmly connected together using bolts, welding and other methods to ensure the stability of the building.

Roof Installation:

Once the walls and supporting structures are complete, the roof can be installed, usually using roof panels made of lightweight steel materials.



CONTACT US

Global Cases

Airport

Nigeria Airport is made by steel structure



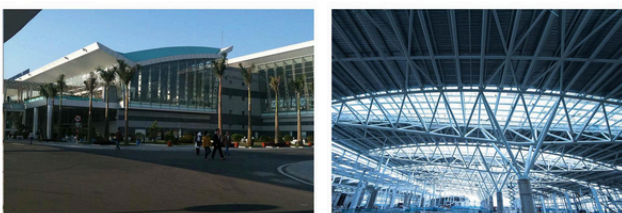
Liansu Factory

Factory in Malaysia



Mall

Mall in United States



Industrial Park

Industry Park in Indonesia



CONTACT US